

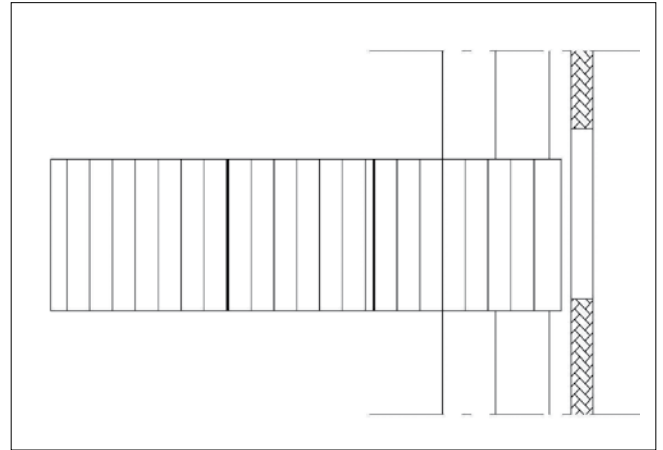
## MOBILE BRIDGE RAMP WITH UNDERCARRIAGE for temporary solutions

The mobile bridge ramp equipped with an undercarriage is the perfect solution for resolving temporary and occasional situations in which stairs or architectural barriers need to be overcome. Its practical wheels allow the unit to be easily moved or else locked in place. The unit is available in various lengths and its width can vary from 60 to 120 cm. A perfect multi-purpose solution for any temporary accessibility requirements at train stations, museums, churches and companies, as well as at the entrances to homes or other locations.

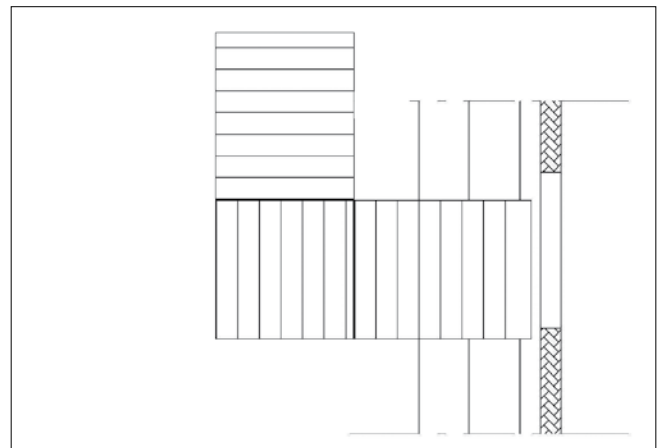


Equipped with **WHEELS** for quick and easy movements.

CONFIGURATION 1



CONFIGURATION 2



SIDE VIEW

